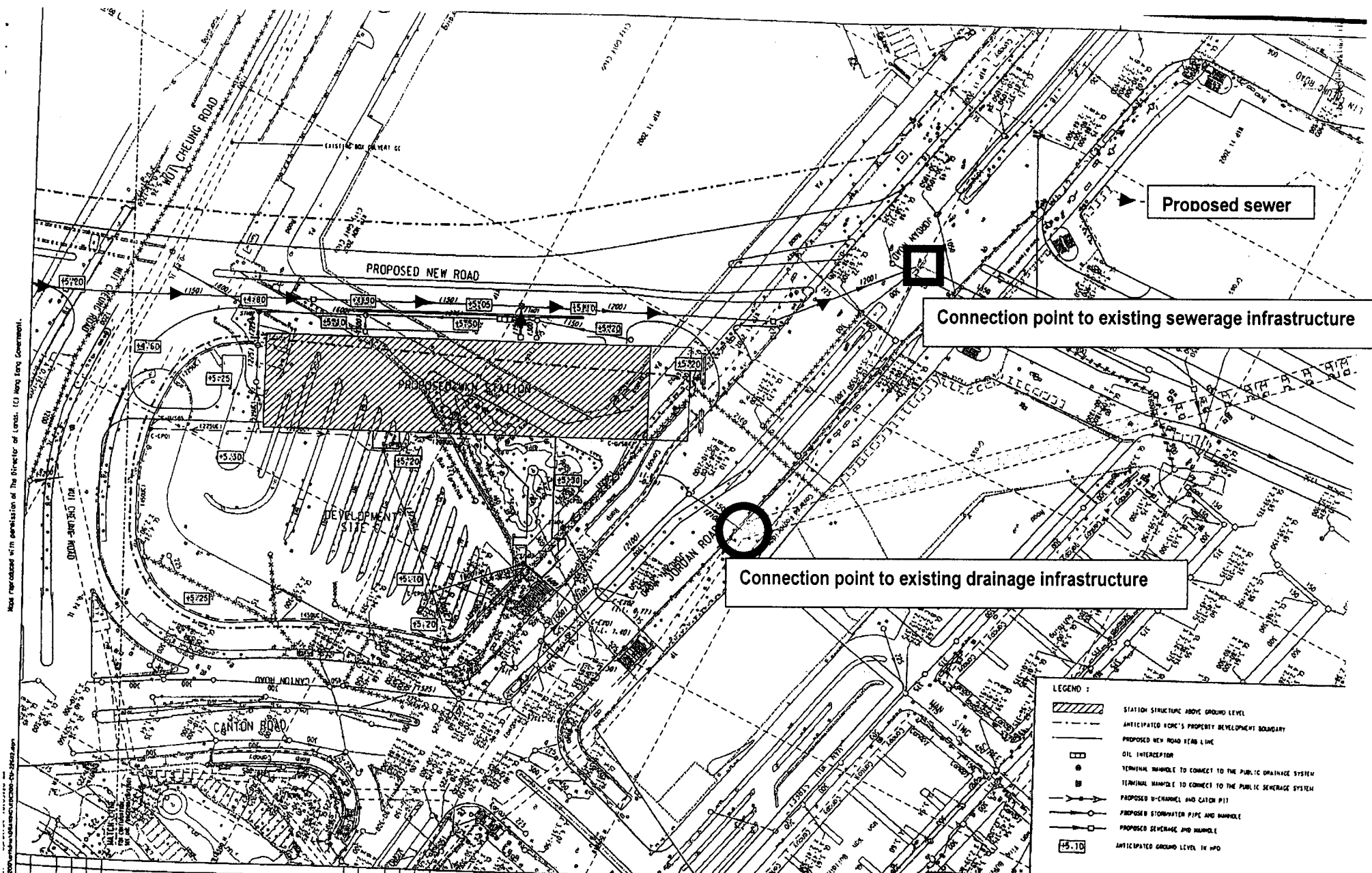


APPENDIX – 8-1

Sewage Discharge Location

Revised reproduction with permission of The Director of Lands. (C) Hong Kong Government.



Proposed sewer

Connection point to existing sewerage infrastructure

Connection point to existing drainage infrastructure

- LEGEND :**
- STATION STRUCTURE ABOVE GROUND LEVEL
 - ANTICIPATED KRC'S PROPERTY DEVELOPMENT BOUNDARY
 - PROPOSED NEW ROAD ROAD LINE
 - OIL INTERCEPTION
 - TERMINAL MANHOLE TO CONNECT TO THE PUBLIC DRAINAGE SYSTEM
 - TERMINAL MANHOLE TO CONNECT TO THE PUBLIC SEWERAGE SYSTEM
 - PROPOSED D-CHANNEL AND CATCH PIT
 - PROPOSED STORMWATER PIPE AND MANHOLE
 - PROPOSED SEWERAGE PIPE AND MANHOLE
 - ANTICIPATED GROUND LEVEL IN MPO

REV	DATE	BY	CHK	APP	DESCRIPTION

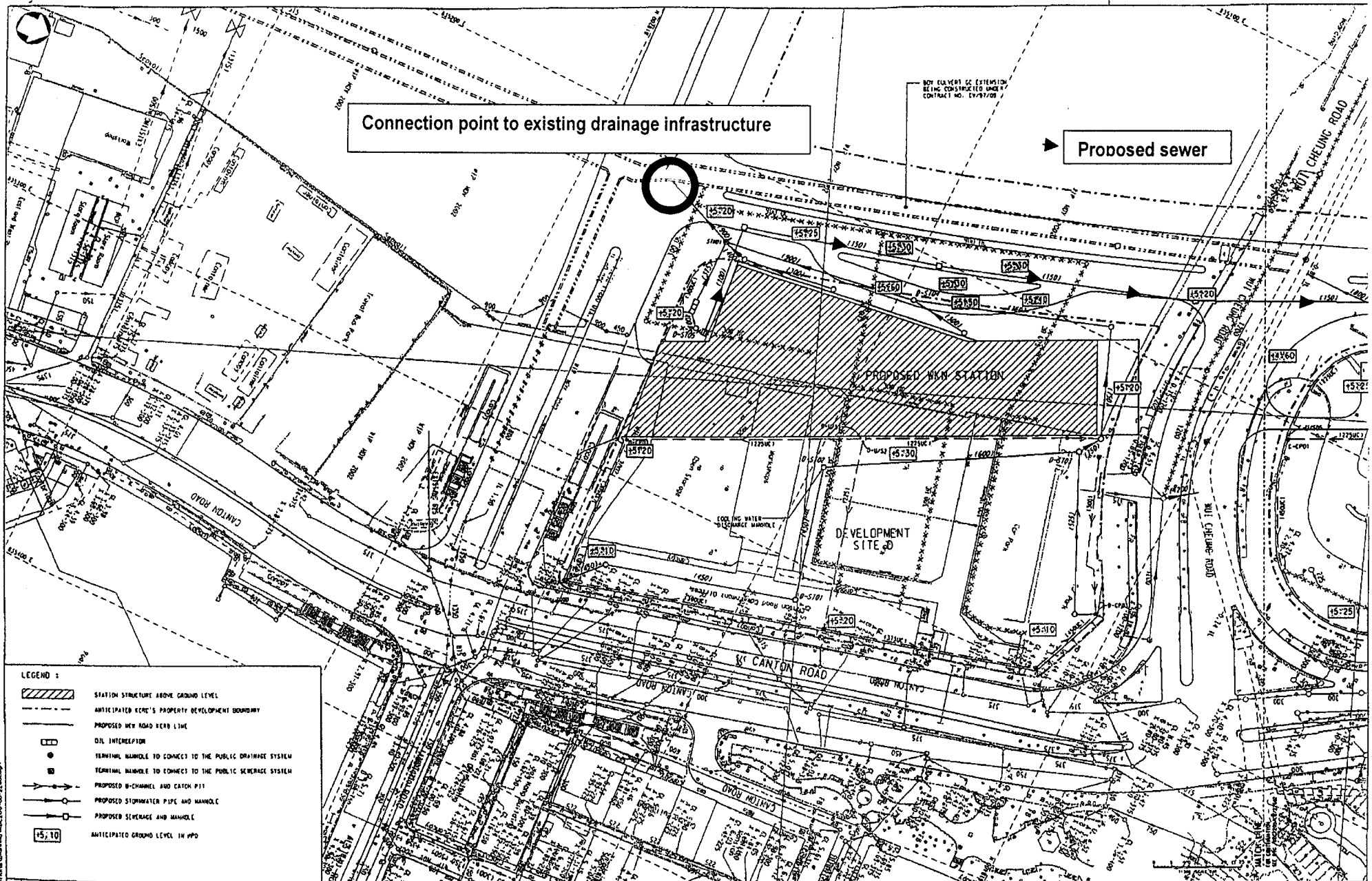
DESIGNED BY	
DRAWN BY	
CHECKED BY	
IN CHARGE	
DATE	

九龍南環線
 Kowloon Southern Link

Approved By: GIVE ANJUN & PARTNERS
 TECHNICAL MANAGER & PARTNERS
 HONG KONG

KOWLOON SOUTHERN LINK
 NORTHERN SECTION
 WEST KOWLOON STATION
 PROPOSED SITE DRAINAGE AND SEWERAGE

SCALE	1 : 500 @ 1/4
ORIENTATION	ORIENTATION REFERENCE
DATE	REV NO
DRAWING NUMBER	KDC200/CU/22602 A
RAILWAY LOCATION	CLASS 10001 @ 1/1



Connection point to existing drainage infrastructure

Proposed sewer

- LEGEND :**
- STATION STRUCTURE ABOVE GROUND LEVEL
 - ANTICIPATED ECRC'S PROPERTY DEVELOPMENT BOUNDARY
 - PROPOSED NEW ROAD KERB LINE
 - OIL INTERCEPTION
 - TERMINAL MANHOLE TO CONNECT TO THE PUBLIC DRAINAGE SYSTEM
 - TERMINAL MANHOLE TO CONNECT TO THE PUBLIC SEWERAGE SYSTEM
 - PROPOSED IN-CHANNEL AND CATCH PITS
 - PROPOSED STORMWATER PIPE AND MANHOLE
 - PROPOSED SEWERAGE PIPE AND MANHOLE
 - ANTICIPATED GROUND LEVEL IN MPO

DESIGNED BY
 DRAWN BY
 CHECKED BY
 P11
 TO CHANGE

KCR 九龍兩環線
 Kowloon Southern Link

ATKINS

Prepared by: DWK/ANP & PARTNERS

KOWLOON SOUTHERN LINK
 NORTHERN SECTION
 WEST KOWLOON STATION
 PROPOSED SITE DRAINAGE AND SEWERAGE

SCALE	1 : 500 @ A1
DATE/ISSUE	DATE/TWO/REVISION
DRWING NUMBER	KDC200/CU/22601 A
PARTY LOCATION	STAGE SHEET NO.